

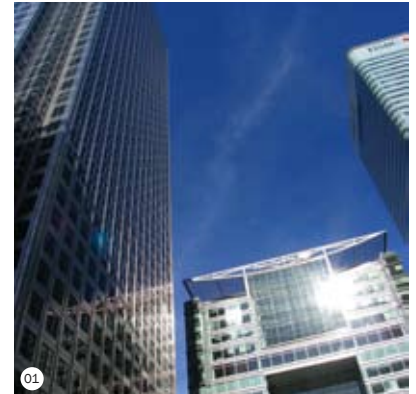


## Spatial Economics and Strategy

### Local Economic Assessment for Tower Hamlets

Client: London Borough of Tower Hamlets

NLP was appointed by LB Tower Hamlets to carry out its Local Economic Assessment (LEA), in line with the new statutory duty. The LEA included collation of evidence to establish an economic narrative for the borough; the mapping of policy, investment and institutional architecture; developing a shared story of place; setting the agenda for an action plan; and a worklessness assessment. The LEA needed to consider some complex issues including dynamic patterns of migration and commuting, the future of the financial services industry at Canary Wharf, capturing the benefits of 2012 Olympics legacy, and tackling deep-seated worklessness problems on the doorstep of one of the world's most successful global centres.



### West Oxfordshire Economic Study

Client: West Oxfordshire District Council

NLP undertook an economy study for this rural district in the Green Belt outside Oxford. The study comprised a review of the district's economic strategy, including 'visioning' of future growth potential. The study considered how the area could capitalise on the success of Oxford, distinguish itself as an attractive business location and plan for an appropriate level of growth that would not create pressures on its environmental quality or labour supply.



### Economic Study of Development Land at Bournemouth Airport

Client: Christchurch Borough Council

NLP assessed the potential economic role of an 80ha strategic employment site beside Bournemouth Airport, to inform the Local Development Framework. This included assessing the types of economic sectors that the site could attract and be promoted for, examining how the site could best meet its potential and economic aims for South East Dorset, developing an overall vision for the site and providing guidance on how the site could best be promoted.



### Strategic Review and Economic Futures

Client: Oldham Rochdale Economic and Skills Alliance

NLP carried out a strategic review of key changes in the landscape for housing regeneration and economic development. This included the changing policy context, the deteriorating economic and housing market situation; and the emergence of new delivery and financing structures. The work provided the basis for a strategic workshop and paper on future strategic direction. Subsequently, NLP presented at a Board Workshop on the changing economic situation, including econometric scenarios, and the likely implications for the priorities of the housing and economic programme.



### The Pantiles, Royal Tunbridge Wells

Client: Targetfollow

NLP prepared a Strategy for the Pantiles area of Royal Tunbridge Wells. The Strategy set out a vision for the rejuvenation based on enhancing the quality and range of the retail offer complemented by a wider range of high quality services and activities to encourage the visitor dwell times and extend levels of daytime and evening activity.

## Future Development Scoping Study for Harworth Bircotes

Client: Bassetlaw District Council

NLP explored the potential for employment and housing growth in and around the former mining town of Harworth. The study specifically focussed on the economic potential of the town, including potential synergies with future development at and around Doncaster Robin Hood Airport. The study provides a basis for a local planning and regeneration strategy. One key aspect of the study was the challenge presented by ensuring employment growth and housing growth is balanced addressing the recent decline in industry Harworth has faced following the closure of its three major employers, including the mothballing of the colliery.



## Nelson Area Development Framework

Client: Pendle Borough Council / English Partnerships / English Heritage.

NLP prepared an Area Development Framework for the town of Nelson in East Lancashire. The work included an economic development strategy, option appraisal, and housing market assessment to produce a long term vision for the town. This included a strong set of economic development initiatives including proposals to enhance the benefits of existing economic clusters. As part of the ADF a delivery vehicle and funding scheme strategy was produced.



## Strategy for Economic Development - Eco-town for Leicestershire

Client: The Co-operative Group/English Partnerships (now Homes and Community Agency)

NLP supported the Co-operative Group and English Partnerships on their joint eco town bid, including specialist advice on employment and economics, education, housing and retail. In considering the employment and economic objectives for the eco-town, NLP advised on: the economic and labour market indicators for the sub-region; the potential economic roles that the eco-town might perform; the key working assumptions adopted including the expected economically active population, self-containment levels, proportion of in-commuters and proportion of B-class employment; the number and type of jobs to be provided in the eco-town and estimates of the floorspace and land requirements.



## Basingstoke Road Industrial Area Economic Strategy, Reading

Client: Reading Borough Council

NLP examined the economic role and importance to the local economy of this 160 ha industrial area within Reading using surveys, interviews and a review of the area's role in the economy. An assessment of the 320 employment sites within the area was undertaken and the scope to release some employment land for other uses was assessed. Future development options for the area were prepared to enable to Council to make a decision on the preferred strategy for a way forward.



## North Tyneside Coastal Zone Strategic Framework:

Client: North Tyneside Council

NLP led a multi-disciplinary team to develop a Strategic Framework and Masterplan for the North Tyneside Coast. The emphasis of the study was on delivering an economic renaissance based upon an improved culture and tourism offer. As part of the commission, NLP prepared an implementation plan that identified potential funding sources, analysed potential delivery vehicles and produced a phased delivery programme and governance map.

### Images:

- 01 - Local Economic Assessment for Tower Hamlets
- 02 - West Oxfordshire Economic Study
- 03 - Bournemouth Airport
- 04 - The Pantiles
- 05 - Future Development Scoping for Harworth Bircotes
- 06 - Nelson Area Development Framework
- 07 - Basingstoke Road Industrial Area
- 08 - North Tyneside Coastal Zone