



## Economic Impact and Appraisal

### Local Economic Assessment for Tower Hamlets

Client: London Borough of Tower Hamlets

NLP was appointed by LB Tower Hamlets to carry out its Local Economic Assessment (LEA), in line with the new statutory duty. The LEA included collation of evidence to establish an economic narrative for the borough; the mapping of policy, investment and institutional architecture; developing a shared story of place; setting the agenda for an action plan; and a worklessness assessment. The LEA needed to consider some complex issues including dynamic patterns of migration and commuting, the future of the financial services industry at Canary Wharf, capturing the benefits of 2012 Olympics legacy, and tackling deep-seated worklessness problems on the doorstep of one of the world's most successful global centres.



### Farnborough Airport

Client: Rushmoor Borough Council

This economic impact assessment of the UK's only dedicated business aviation Airport considered employment and income generation effects of the airport, both currently and for various future levels of air movements. The airport's role in attracting inward investment, retaining businesses in the area and its impacts on the local community were assessed. Impacts of airport growth on local house prices were also examined.



### English National Stadium, Wembley

Client: Wembley National Stadium Ltd.

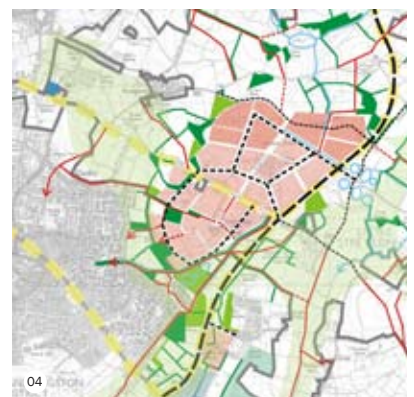
NLP assessed the socio-economic Impacts of the New English National Stadium at Wembley to inform the planning process for this world class facility. This analysed employment effects, expenditure and income on the local area, impacts on tourism and visitor spending, and implications for attraction of investment and regeneration for a declining area of London.



### Leicestershire Eco-town

Client: Co-operative Society

NLP assessed the potential economic role and the scale and types of employment provision required for this 15,000 dwelling eco-town proposal near Leicester, as well as potential commuting levels. Approaches to complementing and avoiding impacts from the eco-town on economic regeneration initiatives in the area were also considered.



### Economic Impacts of Major Hazard Sites

Client Health & Safety Executive.

This study for the Health & Safety Executive (HSE) identified economic and other costs associated with restrictions on development around major hazard sites, such as gasholders, chemical works etc. Impacts arising beside differing types of hazard sites in different types of areas across the UK were examined. This produced a methodology for assessing the economic costs and wider effects of changes to HSE consultation zones around such sites.

## Bournemouth Airport Economic Study

Client: Christchurch Borough Council

This study assessed the potential economic role of an 80 ha strategic employment site beside Bournemouth Airport that had failed to attract significant new development over a 20 year period. This included a review of sectors the site could attract, its infrastructure constraints, an overall vision for the site, the forms of development it was best suited to, and how it could best be brought forward to meet local economic objectives.

## Welbeck Colliery Feasibility Study

Client: Bassetlaw District Council

This study examined the scope for potential after-uses for this colliery site near Mansfield, which was facing closure. NLP examined a range of case studies of other former colliery sites in the UK, explored site constraints, local market demand, policy and infrastructure factors and potential funding sources in order to evaluate the scope for future uses.

## NewHeartlands Housing Market Renewal

Client: NewHeartlands HMR Pathfinder

NLP helped review changes in long term regeneration outcomes over the life of this Pathfinder programme, including demographic, housing, economic and social indicators. The NLP study included a review of the impact of major financial and housing market changes during 2007-09 and helped NewHeartlands develop its business case for future investment.

## Assessment of PPG4

Client: One NorthEast on behalf of England's RDAs

As part of NLP's retained role as lead advisor to the Regional Development Agency Planning and Housing lead-role, this study made the case for Government to review PPG4 guidance on economic development on behalf of England's RDAs. The NLP assessment showed that PPG4 was poorly used and therefore had little impact in supporting economic development. This paved the way for the fundamental review that amalgamated economic development, retail and leisure development under the auspices of the new PPS4.

## Alton Towers Theme Park

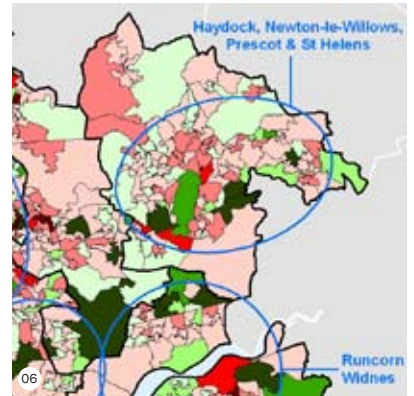
Client: Merlin Entertainments Ltd.

NLP estimated the economic effects of the UK's most visited leisure attraction at Alton Towers in Staffordshire. This assessed impacts at local, regional and national levels including spending with suppliers, direct and indirect employment, off-site spending by visitors and other economic benefits of the theme park to the local area. Similar studies were conducted for Thorpe Park and Chessington World of Adventures.

## Tower of London

Client: Historic Royal Palaces of London

NLP assessed the economic and tourism effects of the Tower of London to the wider London economy as part of evidence to a Public Inquiry on proposals for major office tower development at London Bridge which could affect the setting of this UNESCO World Heritage site.



### Images:

- 01 - Local Economic Assessment for Tower Hamlets
- 02 - Farnborough Airport
- 03 - Wembley Stadium
- 04 - Leicestershire Eco Town
- 05 - Welbeck Colliery
- 06 - New Heartlands Housing Market Renewal
- 07 - Air at Alton Towers © Merlin Entertainments
- 08 - Tower of London © istockphoto.com