



Hotels

Nathaniel Lichfield and Partners has extensive experience advising hotel operators, often on complex sites, including those with special architectural and historic interest. A few examples of our successful track record are shown below. These examples include new build, redevelopment and refurbishment/extension projects.

New Build

Theme Park Hotels

Client: Merlin Entertainments

Planning permissions for hotels at Chessington World of Adventures and Alton Towers have been secured. The hotels form a key element of the company's strategy to transform them into resort destinations. For each project the specific operational characteristics of the theme parks and leisure market had to be fully explained to secure approvals.



Carrick Golf Resort, Midross, Loch Lomond

Client: De Vere Hotels & Leisure Ltd

The De Vere scheme involved the reclamation of a former sand and gravel working, and the creation of a golf resort with a nature reserve, a clubhouse/leisure complex, and holiday apartments and lodges. The scheme won awards in the Scottish Awards for Quality in Planning 2007 and the RTPI Planning Awards 2008.



Syon Park, Middlesex

Client: Radisson Edwardian Hotels

This project, for a 152 bedroom hotel with conference space, banqueting and restaurant accommodation and a spa required an enabling development case to be presented to justify the development of the hotel within the Grade I listed Park and Garden, and in the setting of the Grade I listed Syon House.



Travelodge

Client: Travelodge Hotels

For Travelodge Hotels, planning permissions have been obtained at many sites including Bristol, Carlisle, Fulham, Liverpool and Waterloo along with the company's flagship facility at Heathrow Terminal 5. Issues that NLP has addressed include: impact on residential amenity, design, traffic generation and out-of-centre location.

03

Park Plaza, Westminster London

Client: Park Plaza Hotels

To obtain permission for a 10 storey, 300 bedroom hotel and 12 residential flats, the town planning case addressed several issues including the relationship to nearby listed buildings and the impact upon neighbouring residents. We were retained by Park Plaza Hotels to obtain reserved matters approvals and discharge conditions.



De Vere Village

Client: De Vere Hotels & Leisure Ltd

De Vere Village Hotels has retained NLP to secure permission for several projects including Aston Moss, Bournemouth, Elstree, Farnborough, Leeds, Maidstone, Swansea, Solihull and North Tyneside. The sites often raise planning issues related to justifying an out-of-centre location and development of land allocated for employment use. This often involved the preparation of a detailed hotel capacity need assesment.

Jurys Inn, Glasgow

Client: Stamford Developments Ltd

Outline planning permission for a hotel on Jamaica Street in Glasgow was successfully negotiated on behalf of Stamford Developments Ltd. The site was subsequently occupied by Jurys Inn for an 11 storey, 321 bed hotel.

Extensions/Refurbishments/Redevelopment

The Belfry Hotel, Warwickshire

Client: Quinn Hotels

North Warwickshire Borough Council resolved to grant planning permission at the famous 'home' of the Ryder Cup to comprehensively redevelop the property to create a 5* luxury spa resort, international golf venue and PGA headquarters and Academy. A key part of the extensive planning case included explaining the very special circumstances needed to justify development in the Green Belt.

Grand Hotel, Brighton

Client: De Vere Hotels & Leisure Ltd

For this renowned hotel we secured various permissions to extend and refurbish the Grade II listed Hotel. The extension included 41 new rooms, a new leisure complex and roof-top swimming pool, a glazed bridge link and a new landscaped courtyard. The refurbishment included upgrading all bedrooms and public areas, and replacement of the prominent glazed conservatory along the frontage of the building at street level.

Park Plaza, Albert Embankment, London

Client: Park Plaza Hotels

The redevelopment of a vacant office has resulted in the creation of a 12 storey 460 bedroom hotel with a dramatic view across the River Thames. Working closely with a team of consultants, we obtained the planning permission and negotiated a Section 106 agreement.

Regal Hotels

Client: Regal Hotel Group

This Hotel Group has retained NLP to secure various planning permissions including extensions and modifications to existing hotels. Projects have involved detailed negotiations because many of the hotels are listed buildings.

Bannatyne Hotel, Durham

Client: Bannatyne Hotels

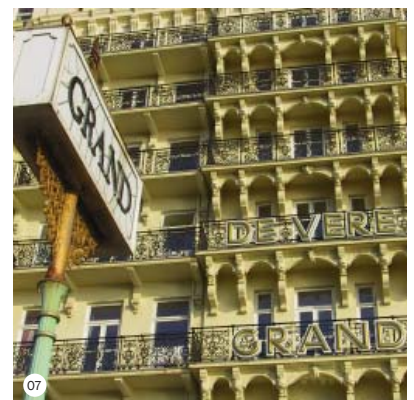
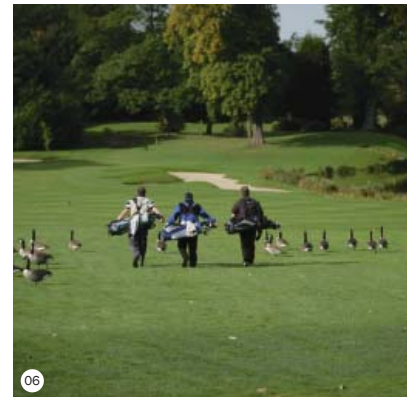
To achieve the client's aspiration to extend the Hotel in an out-of-centre location, the full range of PPS6 planning policy tests was addressed (need, scale, impact, sequential approach and accessibility). The local planning authority agreed with our analysis and the application was approved.

Other Services

Warner Hotels

Client: Warner Hotels

Town planning advice is provided to Warner Hotels - part of the Bourne Leisure group - on its various sites throughout the UK. This includes development plan monitoring and the submission of representations on draft plans, as well as responses to Government consultations on draft legislation and emerging policy.



Images:

- 01 - Alton Towers Hotel
- 02 - Carrick Golf Resort
- 03 - Travelodge, Liverpool © DLA Architecture Ltd
- 04 - Park Plaza, Westminster
- 05 - De Vere Village, Elstree
- 06 - The Belfry Hotel, Warwickshire
- 07 - Grand Hotel, Brighton
- 08 - Park Plaza, Albert Embankment